

REFLECTOR

1946

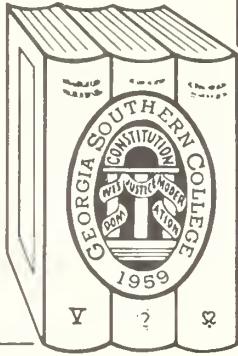


RESERVE
LH
1.G43
R4
1946

*/

E

GEORGIA
SOUTHERN COLLEGE
LIBRARY



Georgia Southern College
Zach S. Henderson Library

Georgia Southern University
Zach S. Henderson Library







Digitized by the Internet Archive
in 2014

<https://archive.org/details/reflector1946na>



... this is a book of Peace

... of work



... of play



... of hope



DEDICATED

TO THOSE MEN OF THIS SCHOOL WHO WITH THEIR
LIVES GAVE INSPIRATION FOR OUR FUTURE.

This is the

1946

REFLECTOR

Published by the

SENIOR CLASS

SELMA JAWOREK *Editor*

HAZEL COWART *Business Manager*

Copyright 1946

Sleep



le



65985



Peace rules the day.



where reason rules the mind.—COLLINS.



THE ADMINI



MARVIN S. PITTMAN
President



MAE MICHAEL
Secretary to the President



ROBERT I. WINBURN
Treasurer

STRATION



ZACH S. HENDERSON
Dean



GENEVA HODGES
Secretary to the Dean and Registrar



VIOLA PERRY
Registrar

The Faculty



BAILLIE
Librarian



BOLTON
Home Economics



BURKS
Principal Lab. High



CARRUTH
Education



COLLINS
Secretary Lab. High



DeLOACH
Lab. High School



BODIFORD
Industrial Arts



EPTING
Music



FLEKKE
Laboratory



GIBSON
Business

Not pictured:

BROUCEK AVERITT DeWITT



GUARDIA
English



GULL
Physical Education



HANNER
Science



HOSTETLER
Industrial Arts



JONES
Lab. High School



KIRBY
Arts



LYON
Education



JOHNSON
Dean of Men



MARGADO
Spanish and History



McCORMACK
Science



McELVEEN
Library



MOYE
Physics



NEIL
Music



NEWTON
History



RUSSELL
English



SMITH
Director of Lewis Hall



STARR
Lab. High School



SWANSON
Speech



VEAZEY
Dean of Women



DUNCAN, WOOD, FREEMAN, JOYNER . . . *Elementary Lab. School*

Who's Who

Among Students in American Universities and Colleges



JEANETTE BROWNING



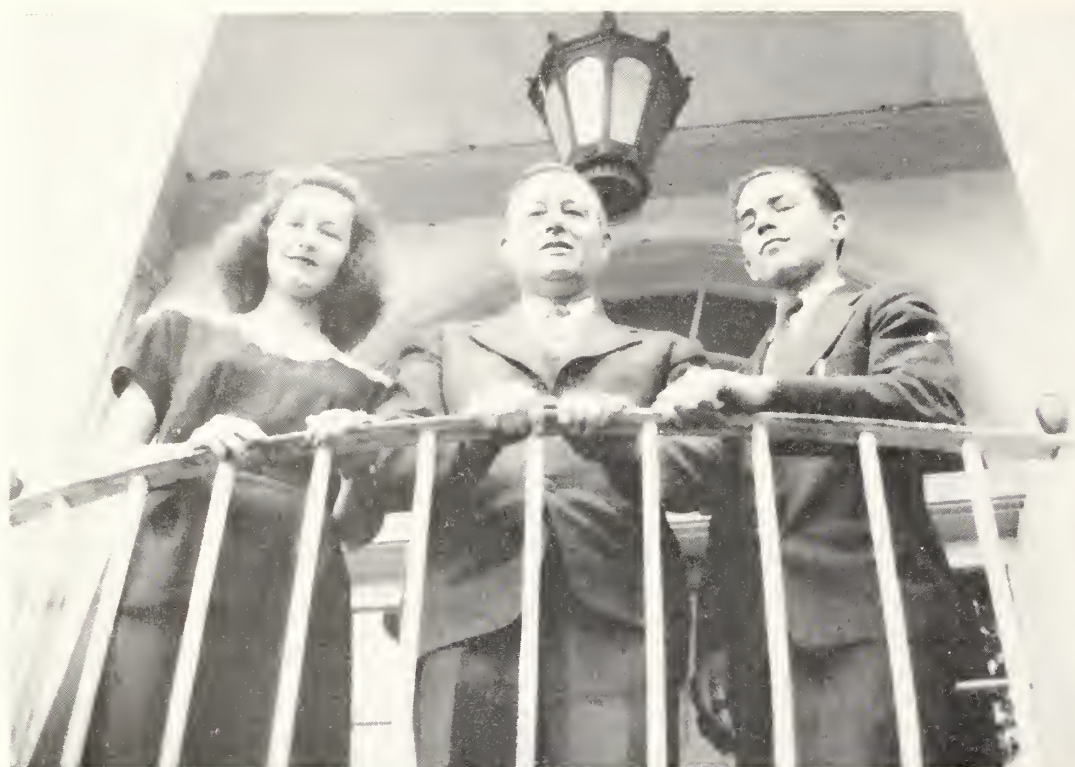
HAZEL COWART



SELMA JAWOREK



ROBERT PADGETT



DARBY

HART

FREEMAN

OFFICERS

SARA ALICE DARBY	<i>President</i>
RAMUS FREEMAN	<i>Vice-President</i>
DAN HART	<i>Secretary-Treasurer</i>

Sponsors

MISS ETHEL SWANSON	MR. RONALD J. NEILL	MR. FEILDING RUSSELL
--------------------	---------------------	----------------------

. *Seniors*



MARTHA ALLEN

Statesboro, Ga.

B.S., Secondary Education; Major: Business;
Minor: Home Economics.



KATHLEEN BLANTON

Surrency, Ga.

Member I.R.C., '43-'44, '44-'45, '45-; Secretary
Lewis Hall, Member Home Ec. Club; Y.W.C.A.;
President B.S.U.

MARTHA





. *Seniors*

JEANETTE BROWNING

Glenwood, Ga.

Philharmonic Choir; Home Ec. Club; Who's Who Among Students in American Universities and Colleges; Member A.A.U.W., I.R.C.

CATHERINE CAVE

Girard, Ga.

President Junior Class; Member of Student Council; House Council Y.W.C.A.; George-Anne Staff; Treasurer I.R.C.; REFLECTOR Staff.

GENEVIEVE CONNER

Atlanta, Ga.

Philharmonic Choir.

NELLENE COVINGTON

Ball Ground, Ga.

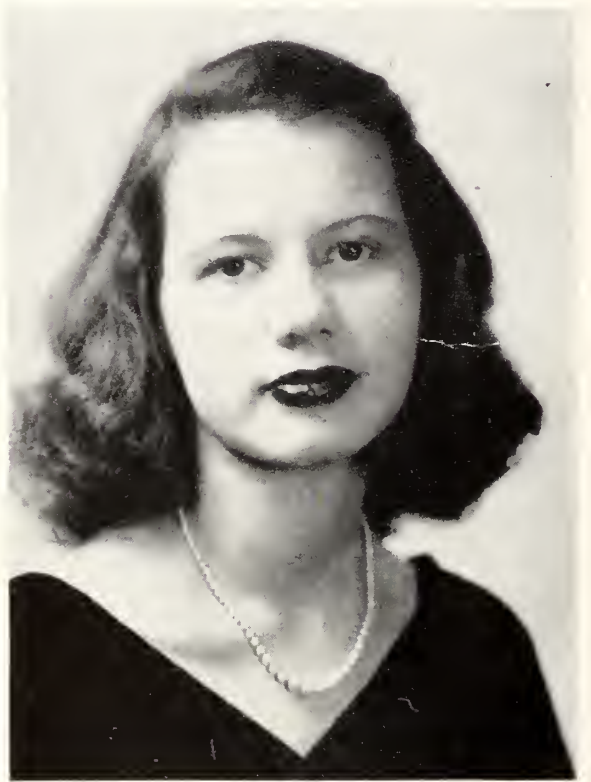
JEANETTE

"TAG"

GENEVIEVE

"LITTLE NELL"





. *Seniors*

HAZEL COWART

Garfield, Ga.

B.S., Secondary Education; Major: English; Member of Student Council, Vice-President, '46; George-Anne Staff, '43-'46; Home Ec. Club, '43-'46; REFLECTOR Staff, Business Manager; Who's Who Among Students in American Universities and Colleges; Y.W.C.A.

SARAH ALICE DARBY

Statesboro, Ga.

B.S., Elementary Education; Member Y.W.C.A.; B.S.U. Council; Pan-Hellenic Council; Fine Arts Club; Eupicurean Sorority; President Senior Class; House Council; I.R.C.; May Queen.

RUTH DOWLING

Hoboken, Ga.

B.S., Elementary Education; Vice-President B.S.U.; Philharmonic Choir; I.R.C.; Y.W.C.A.

MILDRED FORBES

Cave Spring, Ga.

B.S., Secondary Education; Major: English; Vice-President I.R.C.; REFLECTOR Staff.

HAZEL

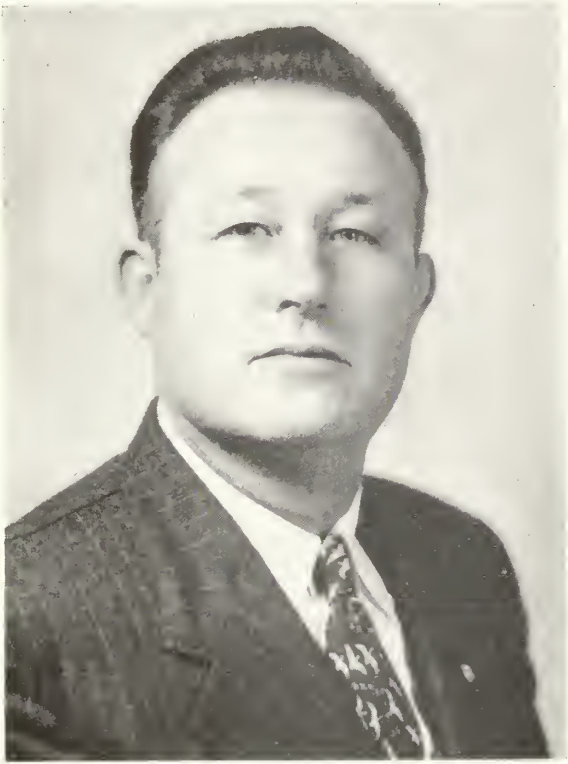


SARAH ALICE



RUTH





. *Seniors*

DAN HART

Statesboro, Ga.

B.S., Secondary Education; Secretary-Treasurer Senior Class; Member of Veterans Club; I.R.C.

GALATA HARTLEY

Metter, Ga.

B.S., Elementary Education.

MELBA HUGGINS

Oliver, Ga.

B.S., Secondary Education; English; Alpha Psi Omega; Dramatic Club, '43-'46, Vice-President, '46; George-Anne Staff, '43-'45; Student Council, '46; Lewis House Council, Vice-President, '45, President, '46; REFLECTOR Staff.

SELMA JAWOREK

Savannah, Ga.

B.S., Secondary Education; English; President Student Council; President Dramatic Club; Vice-President Lewis House Council; Editor of REFLECTOR; Mu Sigma; I.R.C.; May Court; Who's Who Among Students in American Universities and Colleges.

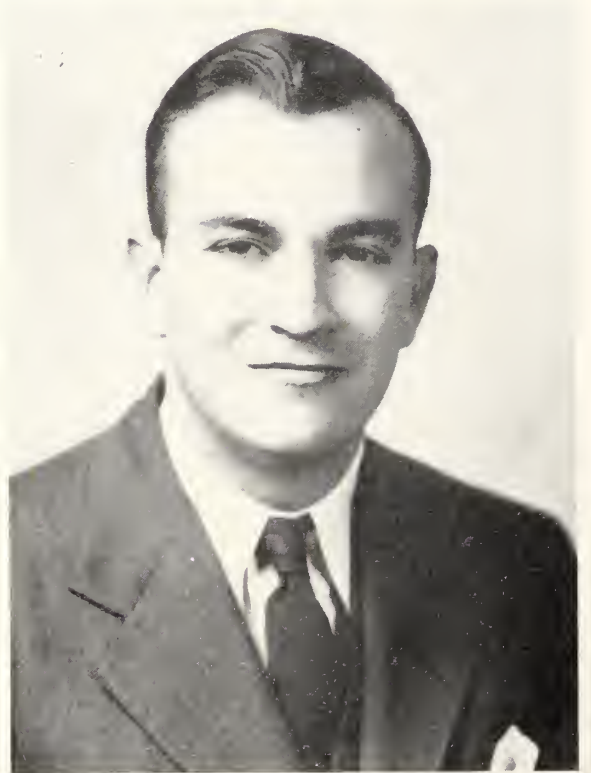
DAN

GALATA

"Hug"

SELMA





. *Seniors*

FRANK MILLER

Toombsboro, Ga.

B.S., Secondary Education; Industrial Arts; House Council; Y.M.C.A., Secretary, '45; Industrial Arts Club, Vice-President, '46.

MARJORIE ODUM

Arabi, Ga.

B.S., Secondary Education; History; House Council; Y.W.C.A.; Chorus; Mu Sigma; I.R.C.; Home Economics Club, Vice-President, '46.

ROBERT PADGETT

Collegeboro, Ga.

B.S., Secondary Education.

DONNIE JO REAGAN

Millen, Ga.

B.S., Secondary Education; History; Home Economics Club; I.R.C.; Chorus; George-Anne Staff; Y.W.C.A.

FRANK



"MARGIE"

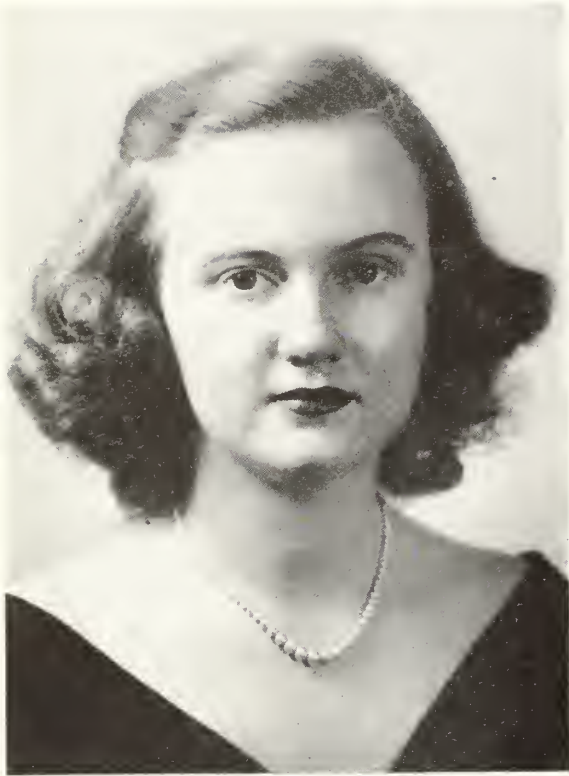


BOB AND FAMILY



DONNIE





. *Seniors*

ANNE SMITH

Metter, Ga.

B.S., Secondary Education; History.

FAY THEUS

Ludowici, Ga.

B.S., Secondary Education; English

VICKIE THOMPSON

Dawson, Ga.

B.S., Secondary Education; History.

MAGGIE VANN

Pembroke, Ga.

B.S., Secondary Education; Business; Home Ec. Club, President, '46; East House Council; Y.W. C.A., Secretary-Treasurer, '46; George-Anne Staff, '43-46; I.R.C.; Masquers; B.S.U.; Treasurer Junior Class.

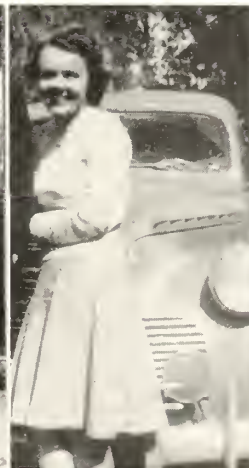
ANNE



FAY

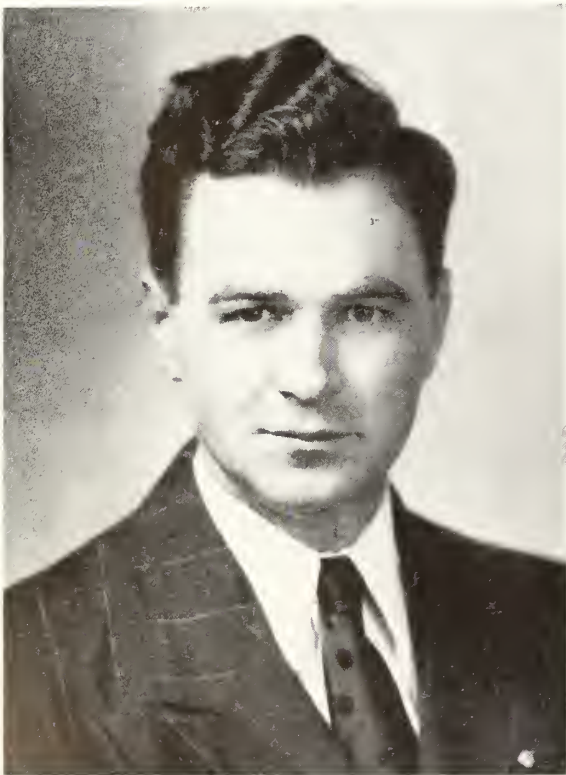


VICKIE



MAGGIE





. *Seniors*

PATE WARREN

Stillmore, Ga.

B.S., Secondary Education; Industrial Arts; Industrial Arts Club, President, '46; Basketball; Dramatics Club; Y.M.C.A.; Veteran's Club, '46; I.R.C.; Vice-President Sophomore Class, '40.

THELMA WARREN

Jesup, Ga.

B.S., Elementary Education; East House Council Vice-President, '46; Home Economics Club Secretary, '46; Y.W.C.A.

FLOYD WATKINS

B.S., Secondary Education; English.

JUANITA WYATT

Brooklet, Ga.

House Council, President, '46; Orchestra; Home Ec. Club, Vice-President, '45; Chorus; Mu Sigma; REFLECTOR Staff; Y.W.C.A.

PATE



THELMA



FLOYD AND ANNE



"Josie"



JUNIORS

OFFICERS

JACKIE ANDERSON STRANGE	<i>President</i>
ELDRED MANN	<i>Vice-President</i>
MAGGIE VANN	<i>Secretary-Treasurer</i>

Sponsors

MR. JACK BROUCEK

MISS RUTH BOLTON

*"Those Christians best deserve the name
Who studiously make peace their aim."*



GRACE AMERSON
Lexsy, Ga.

FRANCES ANDERSON
Statesboro, Ga.

HILDA CULBREATH
Union Point, Ga.

BETTYE ANCHORS
Augusta, Ga.

MARY LEE BRANNEN
Statesboro, Ga.

ELEANOR BURGESS
Ashburn, Ga.

BARBARA ANDERSON
LaFayette, Ga.

ALETHA BROWN
Hinesville, Ga.

NORMAN CHAMPION
Collegeboro, Ga.



JERRY HAMILTON
Vidalia, Ga.

JOSEPH ALLEN JONES
Waycross, Ga.

RITA McRAE
Mt. Vernon, Ga.

EVELYN JAMES
Blackshear, Ga.

MARY LOIS JONES
Jesup, Ga.

ELDRED MANN
Glenville, Ga.

BETTY JONES
Nahunta, Ga.

LLOYD C. LEE
Ft. Lauderdale, Fla.

FLOYD MEEDS
Statesboro, Ga.



MARY MILES
Baxley, Ga.

JACK MILLER
Toombsboro, Ga.

MARDETTE NEEL
Savannah, Ga.

JOYCE NEWTON
Hilltonia, Ga.

MARY FRANCES PHILLIPS
Soperton, Ga.

DOROTHY RAY
Lyons, Ga.

JACKIE STRANGE
Statesboro, Ga.

ALMA SMITH
Lyons, Ga.

SOPHOMORES



JOHN GODBY *President*
Sardis, Ga.

ANNE HENDRIX *Vice-President*
Cedartown, Ga.

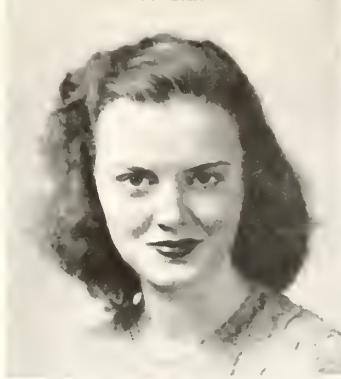
SARAH SLATON *Secretary*
Edison, Ga.

BILL HENDRY *Treasurer*
Adel, Ga.

Sponsors

MR. G. S. BAILLIE
MISS HESTER NEWTON
MISS QUEEN COLLINS

BERTHA ALLEN
Brunswick, Ga.



MARY ALLEN
Statesboro, Ga.

MILDRED ANDERSON
Grovetown, Ga.



MARJORIE ANDERSON
Statesboro, Ga.

SARA ANDERSON
Grovetown, Ga.



BETTY JANE BURKS
Griffin, Ga.

LOUISE CHAMPION
Collegeboro, Ga.

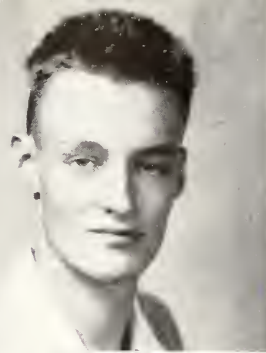


CAROLYN ELLINGTON
Edison, Ga.

CORDELIA ELLIS
Wrens, Ga.



JOHN G. FLETCHER
Statesboro, Ga.



JIMMIE GILLIS
Adrian, Ga.

JAMES COOLSBY
Naylor, Ga.



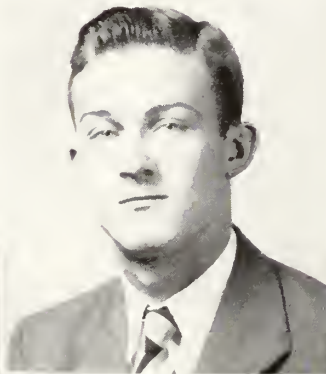
IMOGENE GROOVER
Statesboro, Ga.

HAZEL HAMM
Cobbtown, Ga.



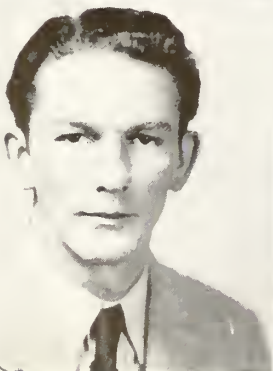
JOINNIE HEATH
Jacksonville, Fla.

FRANCES HERRINGTON
Hawkinsville, Ga.



MAYO HUDSON
Stillmore, Ga.

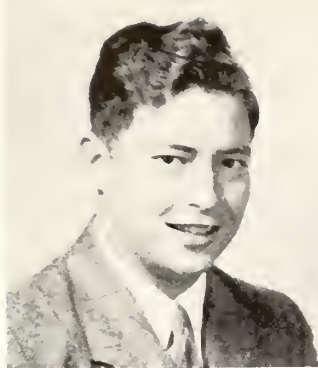
BILLY JOHNSON
Statesboro, Ga.



LAMBUTH KEY
Statesboro, Ga.

GLORIA LAMB
Swainsboro, Ga.

MAX LOCKWOOD
Doerun, Ga.



SYBIL NEWTON
Hilltonia, Ga.

SAMIE PADGETT
Collegeboro, Ga.



ANN PARKER
Ludowici, Ga.

MARY VIRGINIA PHILLIPS
Reidsville, Ga.



RUTH QUARLES
Dalton, Ga.

FRANCES REEVES
Fitzgerald, Ga.



JANELLE ROBINSON
Sardis, Ga.

RICHARD ROWE
Claxton, Ga.



CHRISTINE SHUPTRINE
Odum, Ga.



ELIZABETH SMITH
Metter, Ga.

ELIZABETH RUTH SMITH
Swainsboro, Ga.



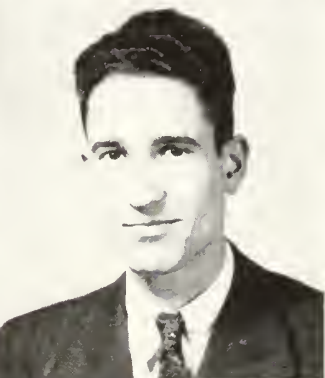
JEAN COOPER SMITH
Brunswick, Ga.

SUE SMITH
Flovilla, Ga.



DORIS SPELL
Wrightsville, Ga.

DOROTHY SPELL
Wrightsville, Ga.



PEGGY STANFIELD
Glenville, Ga.

Z. L. STRANGE
Statesboro, Ga.



NELLIE SWANN
Wrens, Ga.

BETTY THOMPSON
Brooklet, Ga.

GRIFFIN THOMPSON
Toombsboro, Ga.



MARION THOMPSON
Patterson, Ga.

JUANITA TILLMAN
Surrency, Ga.



MARGARET WARREN
Pulaski, Ga.

KARLYN WATSON
Register, Ga.



VIRGINIA WELLS
Harlem, Ga.

GUSSIE WILCOX
Wray, Ga.



HELEN WITHROW
Odum, Ga.

SARA BETH WOODS
Statesboro, Ga.



FRESHMEN



BILLY KENNEDY
Statesboro, Ga.
President

EMILY KENNEDY
Statesboro, Ga.
Vice-President

MARTHA TOOTLE
Reidsville, Ga.
Treasurer

HOKE SMITH
Summit, Ga.
Secretary

Student Representatives

BETTY BEASLEY

JOHN BACON

Sponsors

MR. W. S. HANNER

DR. IVAN HOSTETLER

MISS EDITH GULL

GEORGE ADAMSON
Glenville, Ga.

JACQUELYN ARMSTRONG
Oak Park, Ga.

JOHN BACON
Glenville, Ga.

JEWEL ANDERSON
Claxton, Ga.

ROSS ATKINSON
Statesboro, Ga.

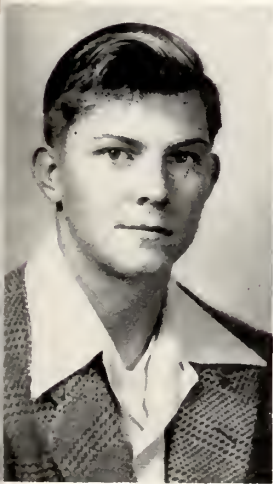
FRANCES BARFIELD
Ashburn, Ga.

BETTY BEASLEY
Stilson, Ga.

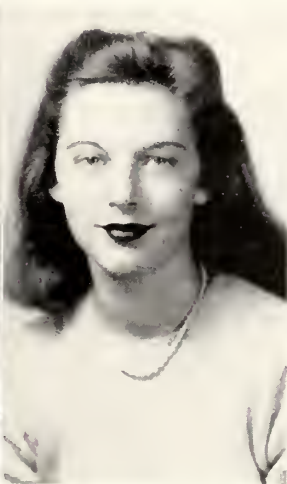
LYNEVE ANDERSON
Kite, Ga.

CAROLYN ATWELL
Wrens, Ga.

DORIS BAXTER
Reidsville, Ga.



ADAMSON



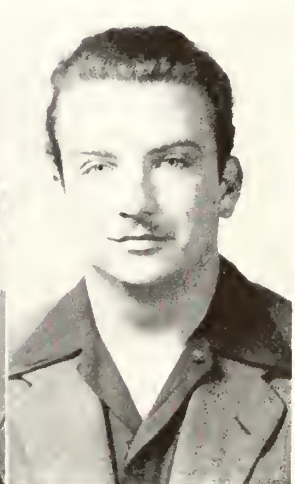
ANDERSON, J.



ANDERSON, L.



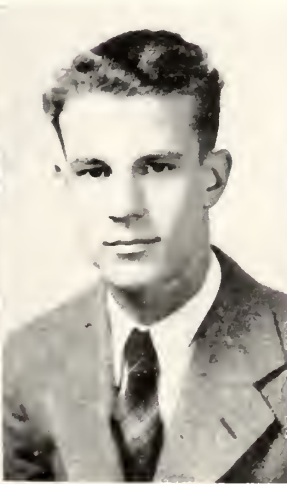
ARMSTRONG



ATKINSON



ATWELL



BACON



BARFIELD



BAXTER



BEASLEY

JOSEPHINE BELCHER
Statesboro, Ga.

AUSTEEN BOWEN
Baxley, Ga.

JOSIE BRIGHAM
Waynesboro, Ga.

BURCHARD BERRY
Savannah, Ga.

BETTY JEAN BOYKIN
Sylvania, Ga.

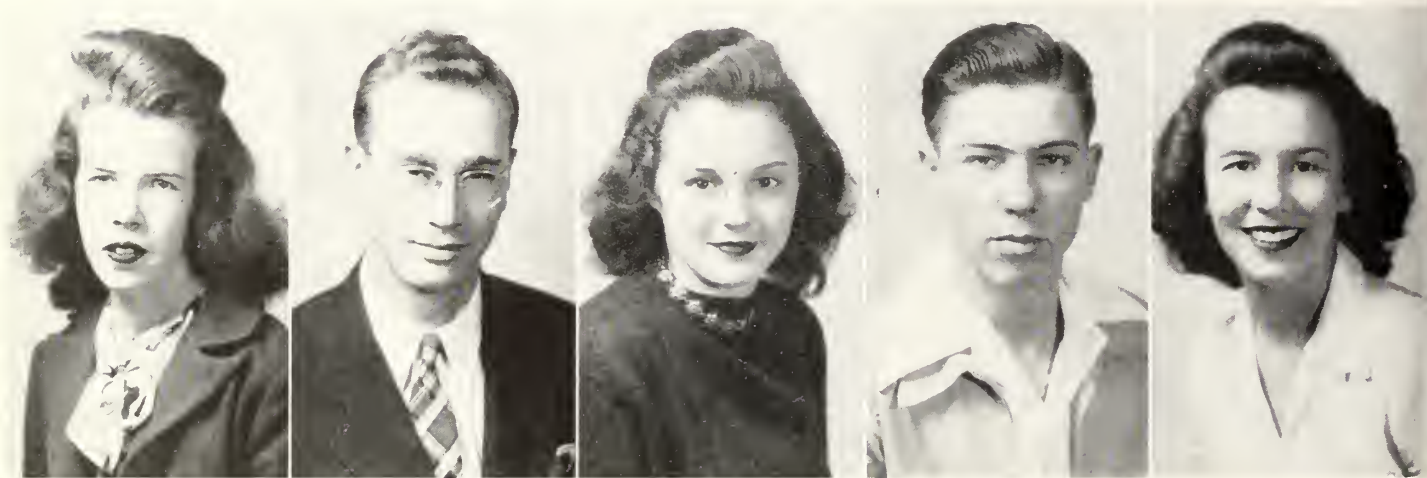
VERA BROCK
Chmax, Ga.

BOBO BRYAN
Brooklet, Ga.

EMMA JEAN BOHLER
Statesboro, Ga.

LILA BRADY
Statesboro, Ga.

BOBBYE BROWN
Edison, Ga.



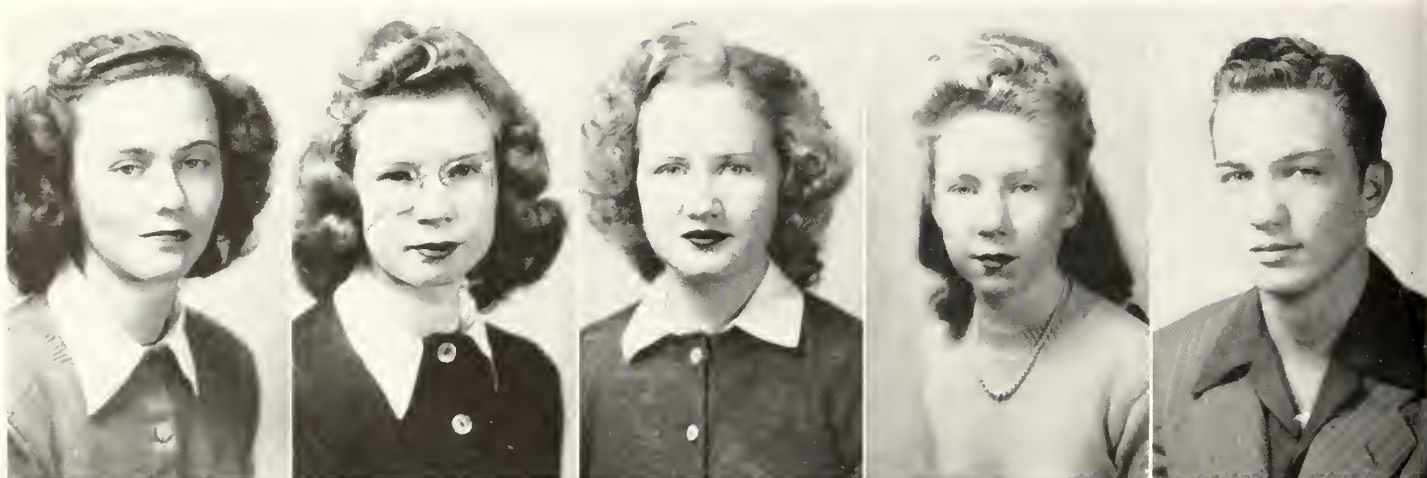
BELCHER

BERRY

BOHLER

BOWEN

BOYKIN



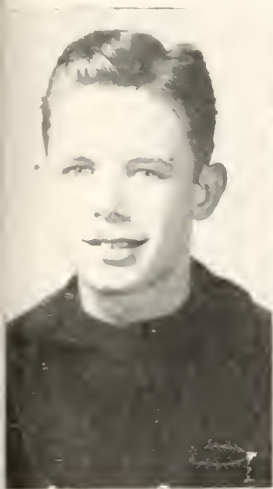
BRADY

BRIGHAM

BROCK

BROWN

BRYAN



BURTON



ALLOWAY



CHANCE



CHESHIRE



CLARK



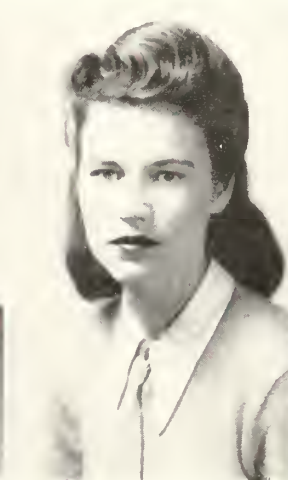
COBB



COLEMAN



COLLINS



COWART, C.



COWART, D.

DREW BURTON
Statesboro, Ga.

WILLIAM B. CHESHIRE
Jesup, Ga.

ELTO JO COLEMAN
Claxton, Ga.

JOYCE CALLOWAY
Collins, Ga.

PEGGY CLARK
Richmond Hill, Ga.

WALLACE COLLINS
Cadwell, Ga.

DELMAR COWART
Rocky Ford, Ga.

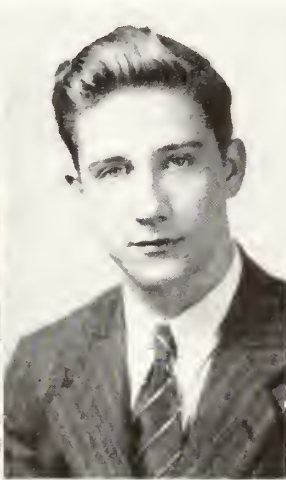
GRACE CHANCE
Statesboro, Ga.

OUIDA COBB
Glenville, Ga.

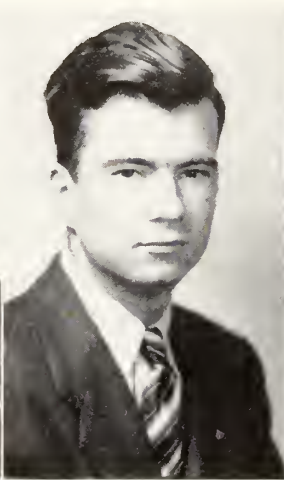
CALLIE COWART
Reidsville, Ga.



GRANFORD



CROUCH



DARSEY



DAVIS, H.



DAVIS, F.



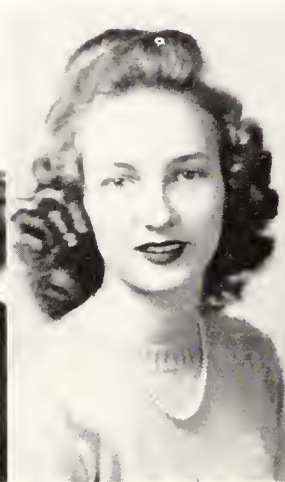
DEAL



DEAN, B.



DEAN, L.



DENMARK



DONALDSON

VELDA GRANFORD
Baxley, Ga.

HELEN DAVIS
Summertown, Ga.

BESSIE DEAN
Odum, Ga.

ALFRED CROUCH
Swainsboro, Ga.

PAUL DAVIS
Summertown, Ga.

LOUISE DEAN
Odum, Ga.

JAMES DONALDSON
Statesboro, Ga.

J. BEN DARSEY
Hinesville, Ga.

JESSE DEAL
Statesboro, Ga.

JOYCE DENMARK
Brooklet, Ga.

DOROTHY DOWNS
Claxton, Ga.

CARLEEN ELLIS
Claxton, Ga.

OLIVER FINCH
Glenville, Ga.

CHRISTINE DRIGGERS
Stilson, Ga.

SARA ETHRIDGE
Leary, Ga.

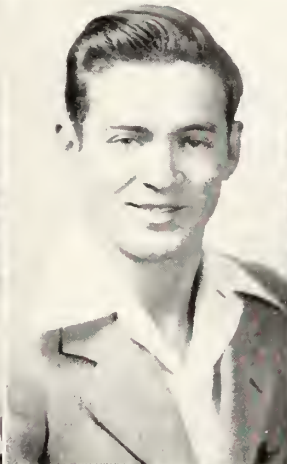
RICHARD FISHER
Sardis, Ga.

LESTER GILLIS
Baxley, Ga.

HARRY DuBOIS
Perry, Ga.

RUSSELL EVERITT
Statesboro, Ga.

ROSWELL FREEMAN
Toombsboro, Ga.



DOWNS

DRIGGERS

DuBois

ELLIS

ETHRIDGE



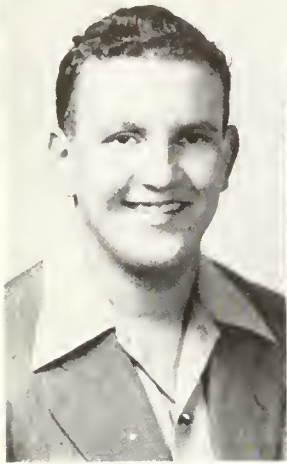
EVERITT

FINCH

FISHER

FREEMAN

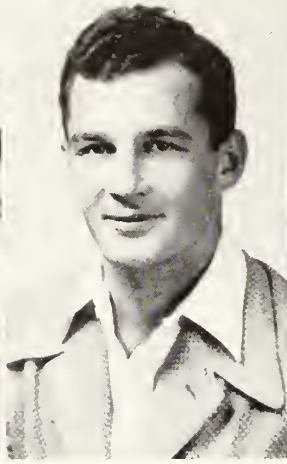
GILLIS



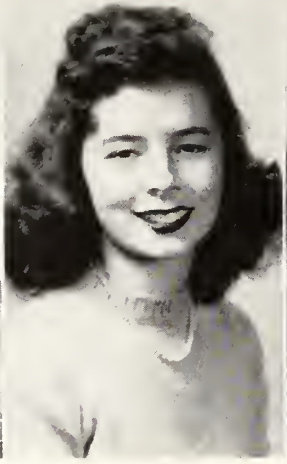
GREEN



GROOVER



HAGAN



HAMM



HATCHER, B.



HATCHER, M.



HEMPHILL



HERRINGTON



HINELY



JOHNSON

MILLER GREEN
Waynesboro, Ga.

ANN GROOVER
Claxton, Ga.

HAROLD HAGIN
Statesboro, Ga.

MARGUARITE HAMM
Claxton, Ga.

BETTY HATCHER
Vidalia, Ga.

MARTHA HATCHER
Beaufort, S. C.

JANELLE HEMPHILL
Grenada, Miss.

CARROLL HERRINGTON
Waynesboro, Ga.

REGINOLD HINELY
Marlow, Ga.

HELEN JOHNSON
Statesboro, Ga.

RONALD JOSEY
Roiser, Ga.

MARY KEITH
Gay, Ga.

VICTOR LANCASTER
Newington, Ga.

EDGAR JOYNER
Screven, Ga.

CAROLYN KENNEDY
Atlanta, Ga.

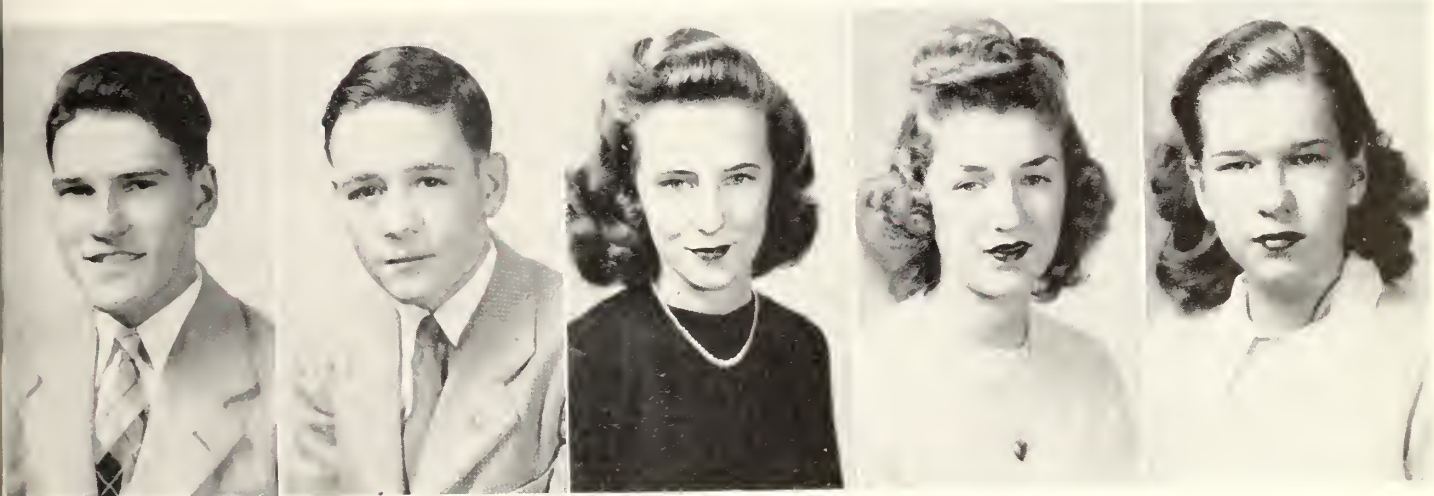
MARTHA LEE
Rocky Ford, Ga.

AUDREY LIGHTSEY
Bristol, Ga.

ROBERTA KEA
Rocky Ford, Ga.

NAVEDA KENYON
Lindale, Ga.

CLARA LEWIS
Statesboro, Ga.



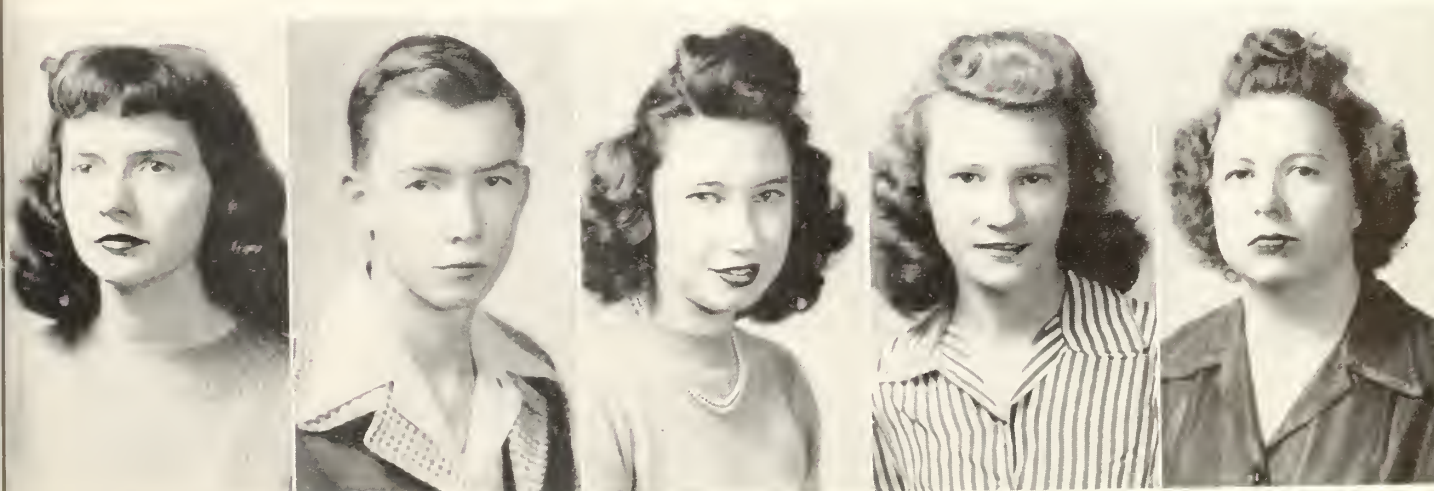
JOSEY

JOYNER

KEA

KEITH

KENNEDY



KENYON

LANCASTER

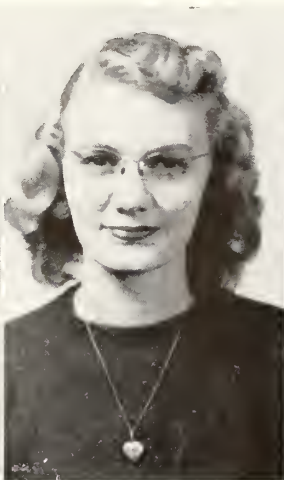
LEE

LEWIS

LIGHTSEY



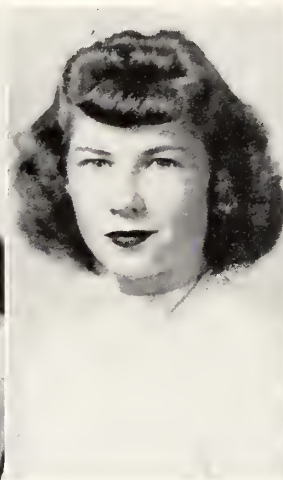
LONG



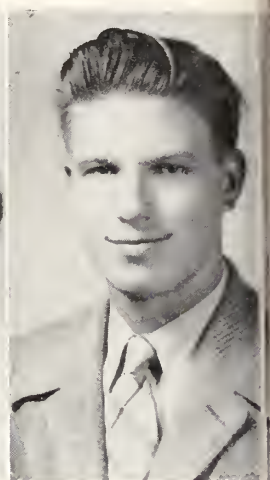
MCDONALD



MARCHMAN



MARTIN



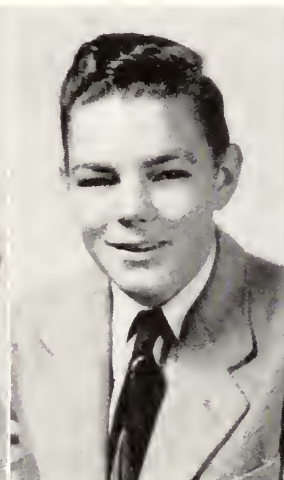
MASSEY



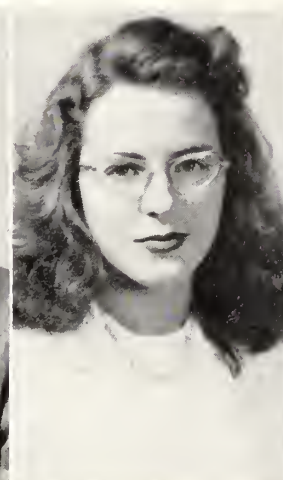
MAY



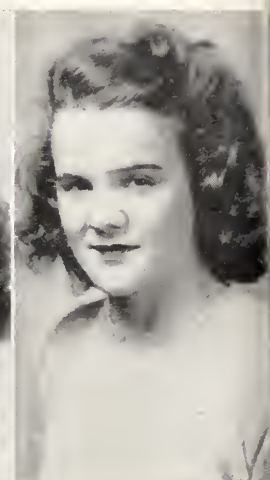
MEADOWS



MILLER



MORRIS



NESMITH

ZONA LONG
Girard, Ga.

MAUDE MARTIN
Patterson, Ga.

OPAL MEADOWS
Oak Park, Ga.

ANN McDONALD
Jacksonville, Fla.

JAMES MASSEY
Barwick, Ga.

BILLY MILLER
Rockyford, Ga.

RAMONA NESMITH
Statesboro, Ga.

CLAIR MARCHMAN
Hawkinsville, Ga.

SARAH ANN MAY
Pembroke, Ga.

MARY MORRIS
Collins, Ga.

ARLO NESSMITH
Albany, Ga.

GILBERT PARKER
Ogeechee, Ga.

MYRTICE PROSSER
Statesboro, Ga.

JOEL NEWSOME
Statesboro, Ga.

MAMIE JO PARKER
Savannah, Ga.

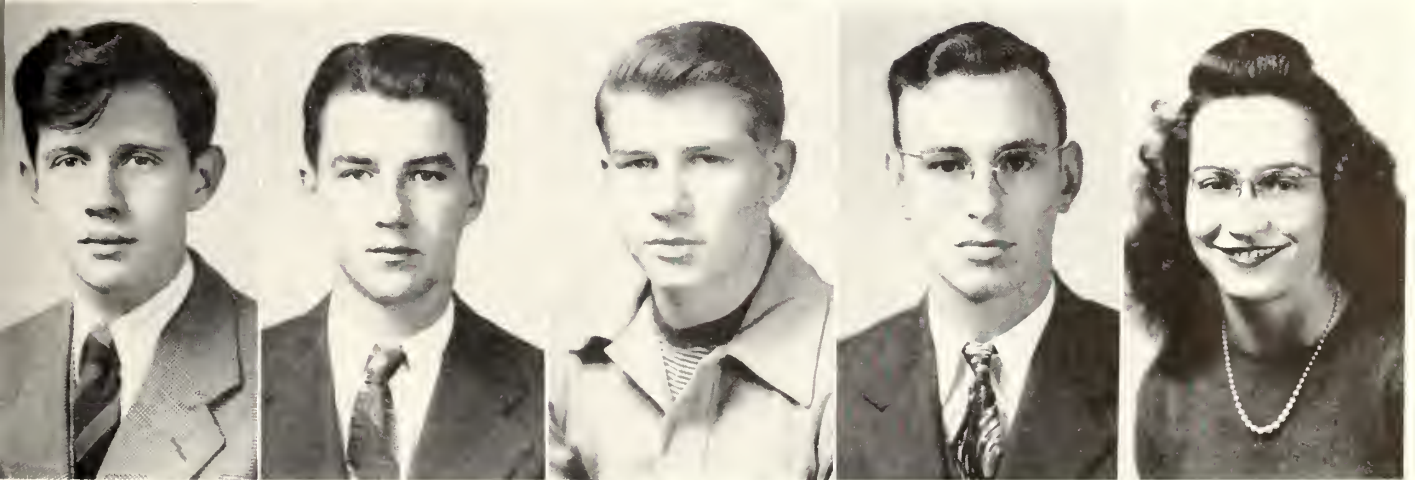
MARGARET PURCELL
Glennville, Ga.

VIRGINIA RAWTON
Lyons, Ga.

FOY OLLIFF
Statesboro, Ga.

COLLEEN PARRISH
Statesboro, Ga.

VIRGINIA PURVIS
Glenwood, Ga.



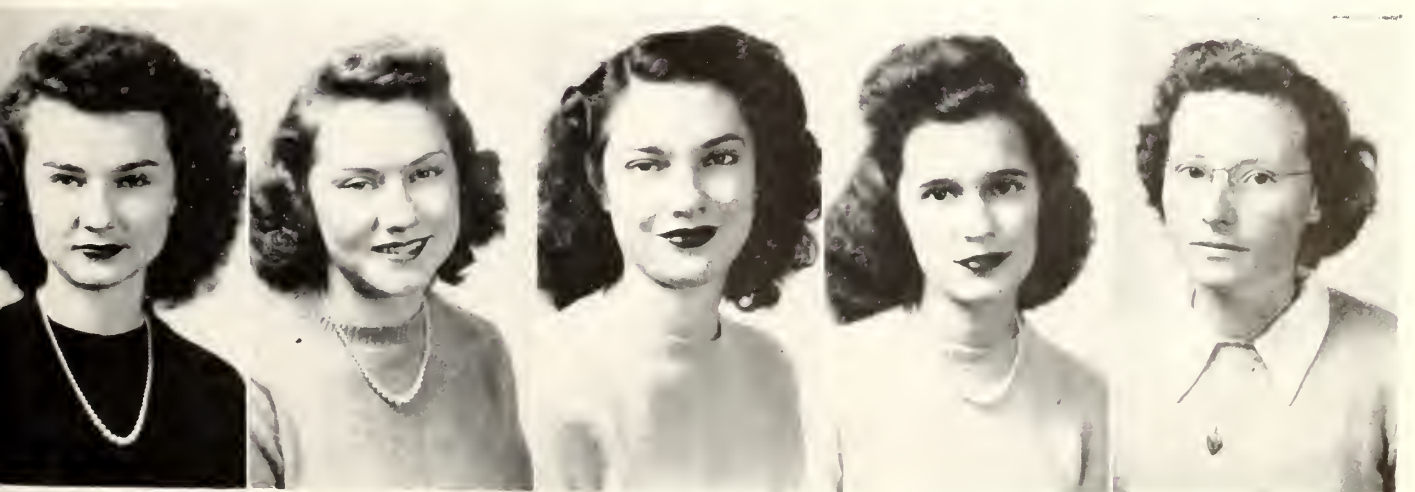
NESSMITH

NEWSOME

OLLIFF

PARKER, G.

PARKER, M. J.



PARRISH

PROSSER

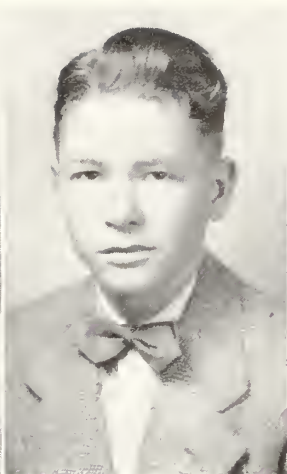
PURCELL

PURVIS

RAWTON



ROBBINS



RODDENBERRY



ROWELL



ROWSE



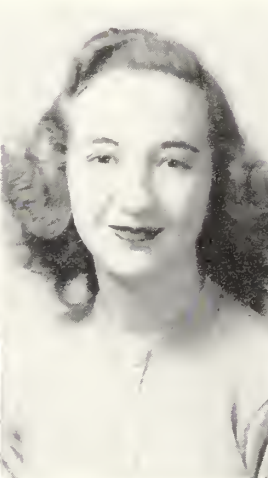
RUSHING



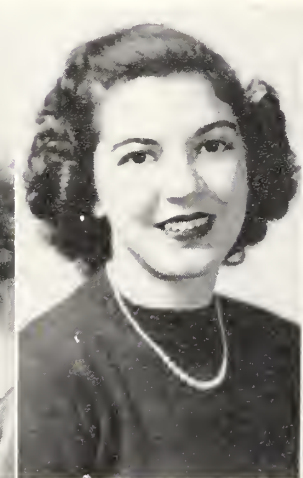
SANDEFORD



SCARABORO



SCRUGGS



SHERMAN



SIMPSON

JACQUELINE ROBBINS
Hiltonia, Ga.

BETTY ROWSE
Statesboro, Ga.

ALICE SCARABORO
Stillmore, Ga.

CHRIS RODDENBERRY
Bristol, Ga.

MARY RUSHING
Register, Ga.

ANNE SCRUGGS
Naylor, Ga.

JEANETTE SIMPSON
Glenwood, Ga.

REGIS ROWELL
Ogeechee, Ga.

VIRGINIA SANDEFORD
Waynesboro, Ga.

MARGARET SHERMAN
Statesboro, Ga.

KATHLEEN SMITH
Wrightsville, Ga.

MARY STOKES
Lakeland, Ga.

JAMES WATSON
Register, Ga.

TOM SMITH
Hinesville, Ga.

DORIS TILLMAN
Surrency, Ga.

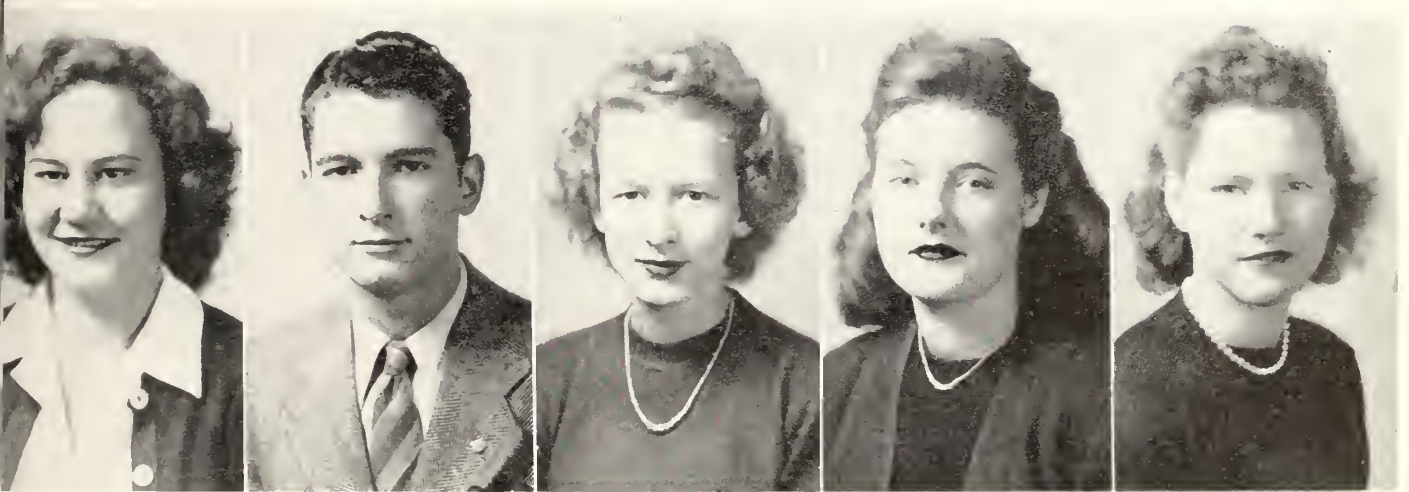
MURIEL WELCH
McDonough, Ga.

IRIS WIGGINS
Oak Park, Ga.

VERA STEWART
Portal, Ga.

ROSALYN TILLOTSON
Stilson, Ga.

GWEN WEST
Statesboro, Ga.



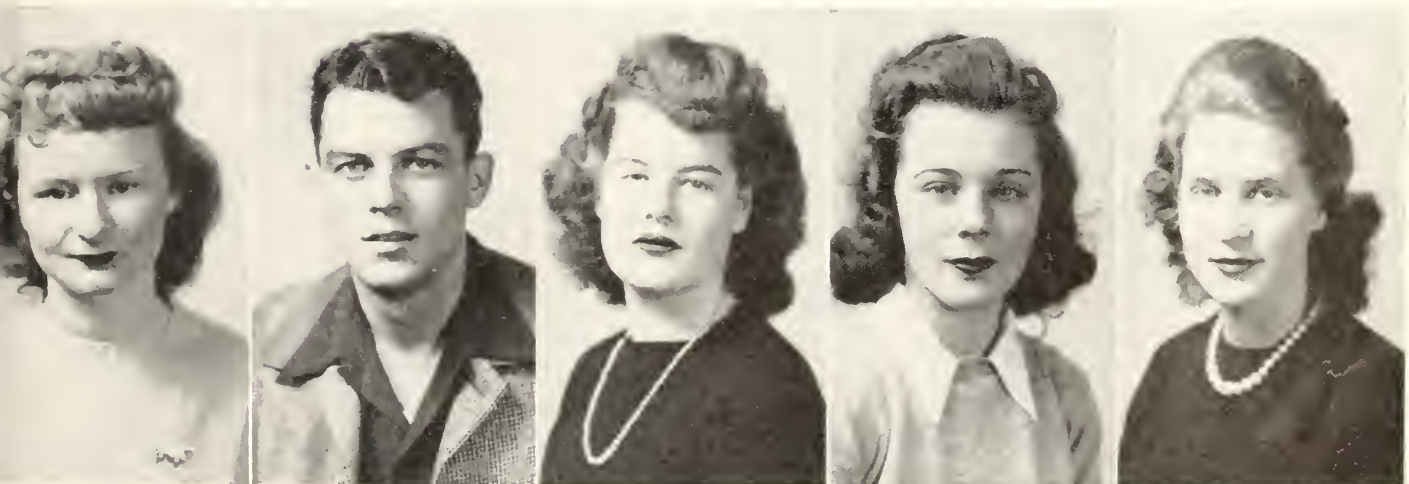
SMITH

SMITH

STEWART

STOKES

TILLMAN



TILLOTSON

WATSON

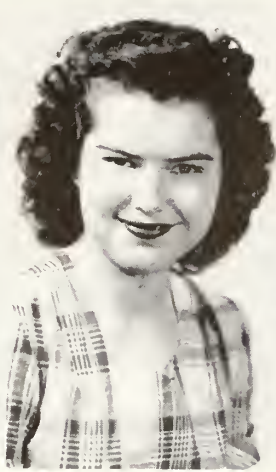
WELCH

WEST

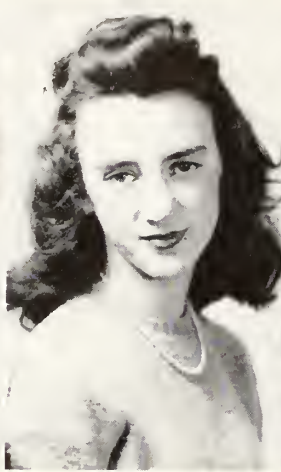
WIGGINS



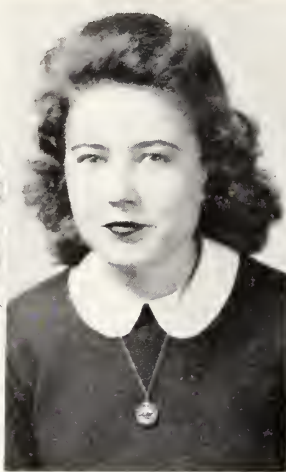
WILLIAMS



WILLIAMS



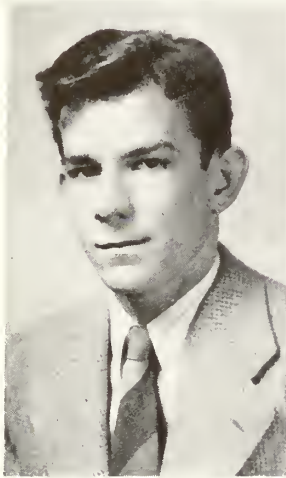
WILSON



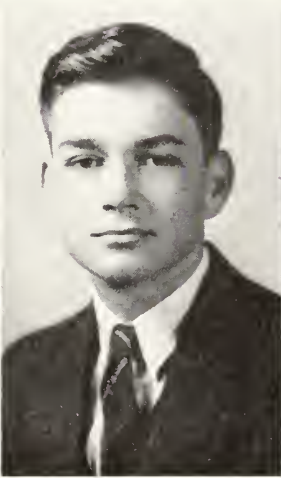
WIMBERLY



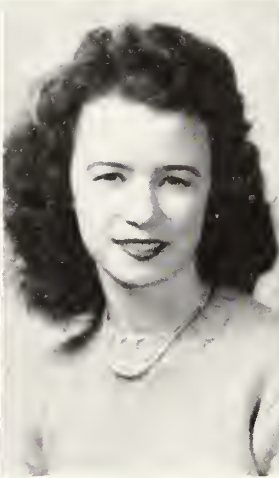
WOODS



WYNN



YARBROUGH



ZETTEROWER



ZETTEROWER



ZIPPERER

GERALDINE WILLIAMS
Irwinton, Ga.

EUGENIA WIMBERLY
Junction City, Ga.

ARTHUR YARBROUGH
Mitchell, Ga.

HAZEL WILLIAMS
Statesboro, Ga.

DORIS WOODS
Hawkinsville, Ga.

BETTY ZETTEROWER
Statesboro, Ga.

WERTZ ZIPPERER
Rincon, Ga.

LOUISE WILSON
Statesboro, Ga.

EDWIN WYNN
Portal, Ga.

HILDA ZETTEROWER
Statesboro, Ga.

To Be Perfectly Candid



The old familiar places



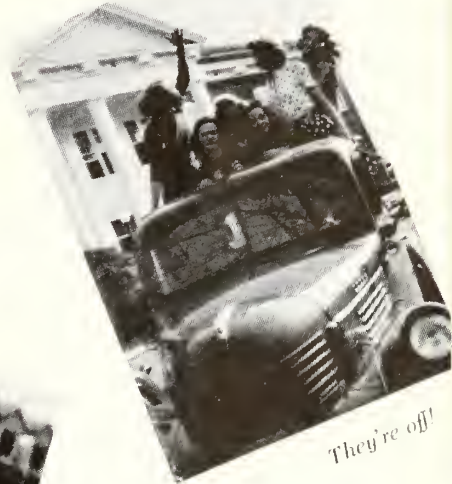
Uplifting?



The guys came back



Maggie and Josie supplement their diet.



They're off!

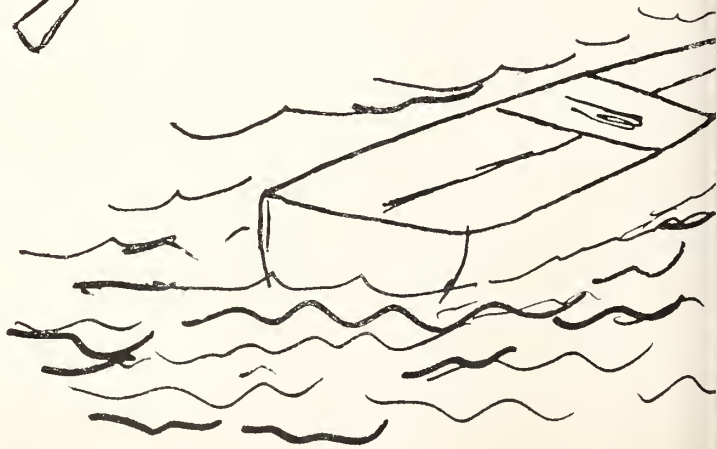
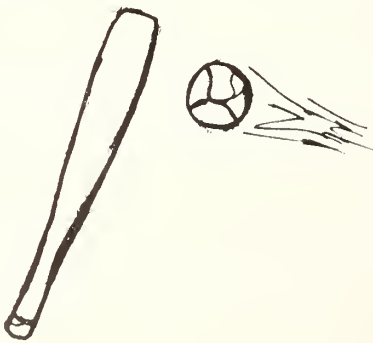
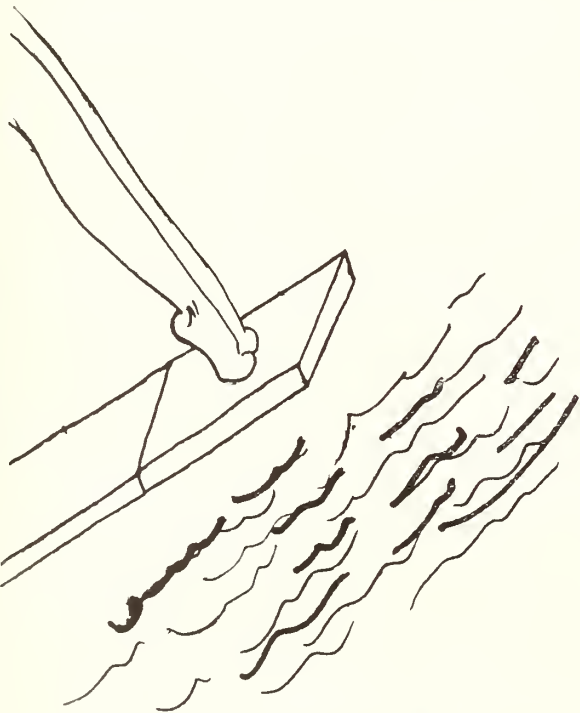
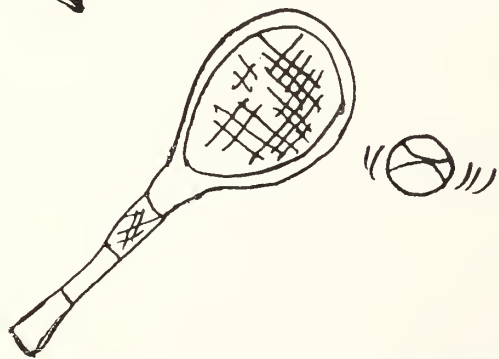
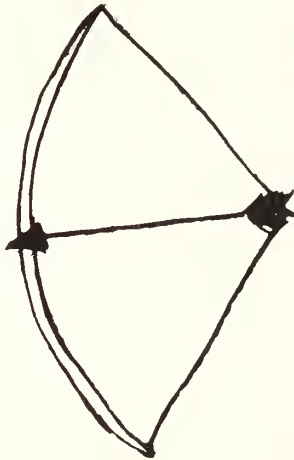
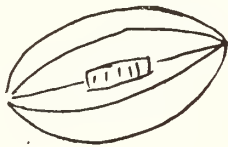


Roughly speaking.

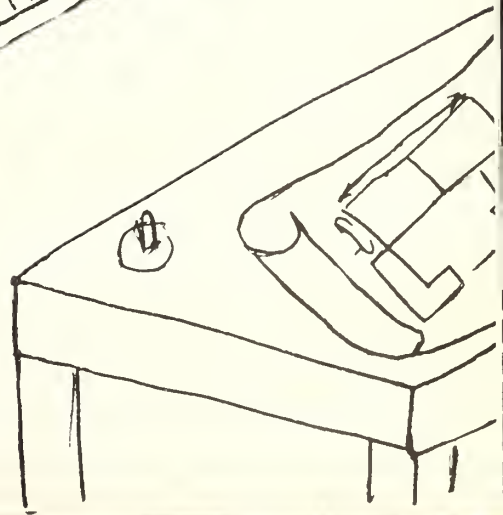
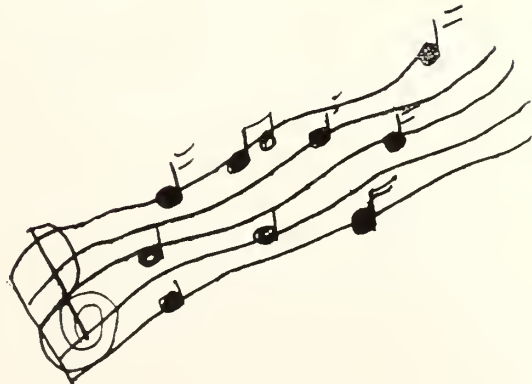
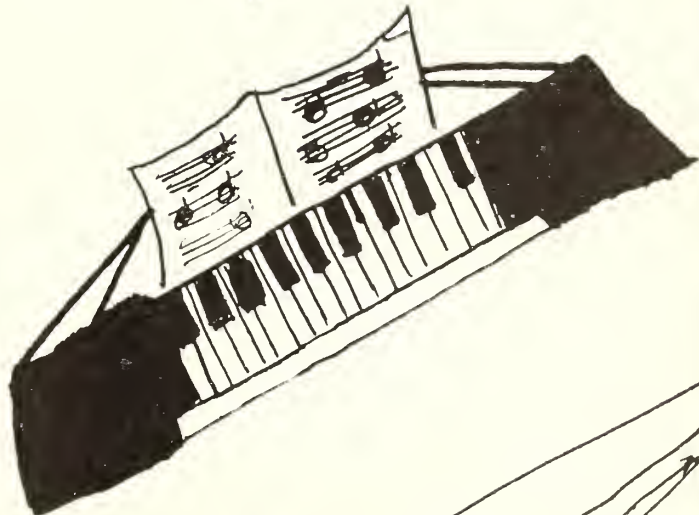
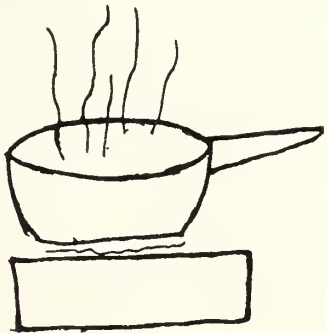
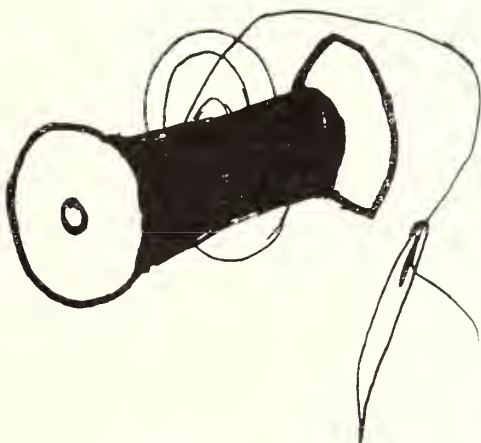


And so they were married.

Activities



ties





"Hag" cuts a rug.



Maytime.



That "Strange" man.



The old ball game.



And it isn't even spring.



What are we waiting for?



Evening watch.



Mary



Mr. Beck



Where's Miss Vedzey, girls?



What's the game?



Billy and Ben



Hot date!



What did you see, Max?



All a-jitter.



Lewis Loulies

THE RE



JAWOREK

SELMA JAWOREK	<i>Editor-in-Chief</i>
MILDRED FORBES	<i>Associate Editor</i>
FAY THEUS	<i>Circulation Manager</i>
MELBA HUGGINS	<i>Photography Editor</i>
JUANITA WYATT, KATHRYN CAVE	<i>Club Editors</i>
HAZEL COWART	<i>Business Manager</i>
SARA ALICE DARBY, THELMA WARREN	<i>Advertising Managers</i>

FLECTOR



COWART



Left to right: Darby, Wyatt, Forbes, Warren, Huggins, Theus.

Y. W. C. A.



Standing: Kennedy, McCrae, Reeves, Darby *Seated:* Jones, Wilcox, Strange, Wells, Tillman, Watson, Hendrix.

OFFICERS

JACKIE ANDERSON STRANGE	<i>President</i>
GUSSIE WILCOX	<i>Vice-President</i>
VIRGINIA WELLS	<i>Secretary-Treasurer</i>
JUANITA TILLMAN	<i>Reporter</i>
EMILY KENNEDY	<i>Recreation Chairman</i>
BETTY JONES	<i>Music Chairman</i>
KARLYN WATSON, ANNE HENDRIX	<i>Vespers</i>
RITA McRAE	<i>Evening Watch, East Hall</i>
FRANCES REEVES	<i>Evening Watch, Lewis Hall</i>

Sponsors

MISS MARIE WOODS

MRS. M. GUARLIA

MRS. BETH K. DUNCAN

Y. M. C. A.



First row: Roddenberry, Lockwood, Johnson, Padgett, Miller, J. Freeman, Thompson, Joyner
Second row: Dillard, Mann, S. Johnson, Darsey, F. Miller . . . *Third row:* Rushing,
 Hinley, Nessmith, Bacon, B. Miller, Smith . . . *Fourth row:* Collins, Gunn, Bowen, Hudson,
 Donaldson, Cooke, Crouch . . . *Fifth row:* Lancaster, Strange, Cowart . . . *Sixth row:* Ander-
 son, Goodbee, McCormick, Green.

OFFICERS

MAX LOCKWOOD	President
MAYO HUDSON	Vice-President
HOKE SMITH	Secretary-Treasurer
Z. L. STRANGE, JR.	Program Chairman
RICHARD STARR, MR. HENRY McCORMICK	Sponsors

STUDENT COUNCIL



Left to right. Carlyn Watson, Ann Hendrix, John Godbee, Selma Jaworek, Hazel Cowart, Billy Johnson, Melba Huggins, Alethia Brown, Betty Beasley.

OFFICERS

SELMA JAWOREK	<i>President</i>
HAZEL COWART	<i>Vice-President</i>
KARLYN WATSON	<i>Secretary</i>
DEAN HENDERSON	<i>Sponsor</i>

The George - Anne



Left to right: Cowart, Vann, Phillips, Tootle, Tillman, Donaldson, Allen, Hamm, Jones.

EDITORIAL STAFF

RAMIUS FREEMAN *Editor-in-Chief*

ASSOCIATE EDITORS

MARTHA TOOTLE, GWEN WEST, RICHARD FISHER, BETTY JONES





Mu Sigma

DELTA CHAPTER



OFFICERS

BARBARA ANDERSON	President
MARJORIE ODOM	Vice-President
ANN HENDRIX	Secretary
RUTH QUABELLS	Treasurer



Back row: Hamilton, Anderson, Jones, Jaworek, Wyatt, Ellis Hendrix, Phillips, Jones . . . Front row: Ellington, Anderson, Quarrels, Swan, Jordan, Slate, Culbreth, Odom, Conner.

International Relations Club



OFFICERS

ALETHIA BROWN	President
MILDRED FORBES	Vice-President
KATHLEEN BLANTON	Secretary-Treasurer
KATHRYN CAVE	Treasurer
HESTER NEWTON	Sponsor

MEMBERS

Grace Amerson, Kathleen Blanton, Alethia Brown, Sara Alice Darby, Bessie Deen, Louise Deen, Mildred Forbes, Mayo Hudson, Nevada Kenyon, Frances Tillman, Donnie Reagan, Gussie Wileox, Walter Dillard, Kathryn Cave, George Williams, Max Lockwood, Buzzie Daniel, Roy P. Warren, Joe Jones, Sue Smith, Joyce Newton, Eleanor Burgess, Jackie Robins, Hazel Hamm, Della Martin, Selma Jaworek.

CHORUS



OFFICERS

RONALD J. NEIL *Director*
 MISS EARLUTH EPTING, MR. JACK BROUCEK *Accompanists*

Board of Directors

BETTY JONES, HOKE SMITH, EVELYN JAMES, RICHARD STARR

MEMBERS

Carolyn Atwell, Barbara Anderson, Marjorie Anderson, Frances Barfield, Betty Beasley, Bobbye Brown, Eleanor Burgess, Emma Jean Bohler, Burchard Berry, Queen Collins, Etta Jo Coleman, Genevieve Conner, Kathryn Cave, Hilda Culbreth, Peggy Clark, Helen Davis, Erma Dollar, Ruth Dowling, Christine Driggers, Jesse Deal, Joyee Denmark, Carleen Ellis, Carolyn Ellington, Cordelia Ellis, Sara Ethridge, Russel Everett, Shirley Forehand, Veda Gibson, Martha Hatcher, Janelle Hemphill, Honnie Heath, Galata Hartley, Jerry Hamilton, Evelyn James, Betty Jones, N. Kenyon, H. Kirby, M. Lee, E. Latham, J. Massey, S. May, M. Miles, S. Newton, R. Nesmith, Mrs. Neil, A. Nesmith, M. Parker, R. Quarles, D. Regan, J. Robinson, E. Ratcliff, M. Rushing, R. Rowell, B. Rowse, D. Spell, V. Stewart, M. Sherman, B. Smith, S. Slaton, J. Simpson, N. Swan, T. Smith, R. Starr, H. Smith, M. Stokes, D. Tillman, R. Tillotson, M. Tootle, M. Thompson, M. Vann, M. Warren, J. Wyatt, G. West, L. Wilson, I. Wiggins, S. Woods, M. Weleh. G. Wilcox, G. Williams, A. Yarbrough.

THE BAND



OFFICERS

HOKE SMITH	<i>President</i>
FRANCES ANDERSON	<i>Secretary</i>
BETTY HATCHER	<i>Treasurer</i>
RUTH QUARELS	<i>Librarian</i>
JACK BROUCEK	<i>Sponsor</i>
J. W. BROUCEK	<i>Director</i>

MEMBERS

Ruth Quarrels, Carolyn Ellington, Peggy Clark, Lambeth Key, Frances Anderson, Joyce Denmark, John Fletcher, Hoke Smith, Richard Fisher, Sara Slaton, Mary Allen, Cussie Wilcox, John Godby, Betty Beasley, Jessie Deal, Betty Hatcher, Jimmie Gillis, Calvin Harrison, Iris Wiggins.

Home Economics Club



OFFICERS

MAGGIE VANN	<i>President</i>
MARJORIE ODOM	<i>Vice-President</i>
THELMA WARREN	<i>Secretary</i>
HILDA CULBRETH	<i>Treasurer</i>
MISS RUTH BOLTON	<i>Sponsor</i>

MEMBERS

Betty Anchors, Hazel Cowart, Hilda Culbreth, Helen Davis, Lawana Daves, Hazel Hamm, Rita McRae, Joyce Newton, Marjorie Odom, Mamye Jo Parker, Mary V. Phillips, Alma Smith, Vera Stewart, Doris Tillman, Maggie Vann, Betty Thompson, Juanita Wyatt, Bessie Dean, Martha Tootle, Virginia Sandford, Emily Kennedy, Elouise Lathan, Christine Shruptrine, Emma Jean Bohler.

Women's Athletic Association



Left to right: Helen Withro, Alma Smith, Miss Guill, Jean Smith, Betty Jones, Syble Newton
Jackie Strange, Frances Anderson.

OFFICERS

JACKIE ANDERSON STRANGE	President
BETTY JONES	Vice-President
ALETHIA BROWN	Secretary-Treasurer

Industrial Arts Club



Left to right: Harrison, Meeks, Hostetler, Miller, Hudson, Godby, Boddiford, Warren, Akins.

OFFICERS

PATE WARREN	President
FRANK MILLER	Vice-President
JOHN GODBEE	Secretary-Treasurer
W. B. AKINS	Sergeant-at-Arms
BODDIFORD, HOSTETLER	Sponsors

East Hall House Council



Back row: Strange, Wyatt, Brown, Newton, Hendrix, Jones . . . Middle row: Watson, Darby, Clark . . . Front row: Vann, Scruggs, Smith, Miss Veazey.

OFFICERS

JUANITA WYATT	President
THELMA WARREN	Vice-President
MAGGIE VANN	Secretary-Treasurer

Lewis Hall House Council



Left to right: Blanton, Reeves, Jones, Smith, Jaworek, Miss Guill, Anderson, Huggins.

OFFICERS

MELBA HUGGINS	President
SELMA JAWOREK	Vice-President
KATHILEEN BLANTON	Secretary-Treasurer

SANFORD HALL HOUSE COUNCIL



Standing: Mann, Miller, Collins, Hudson, Godbee, Dillard . . . *Seated:* Aunt Sophie, Lockwood, Miller.

OFFICERS

MAYO HUDSON	President
JOHN GODBEE	Vice-President
FRANK MILLER	Secretary-Treasurer

Monitors

Eldred Mann, Frank Miller, Buzzie Daniel, Wallace Collins, Max Lockwood, Walter Dillard, Dick Futch.

THE VETS



Moye, Hagan, Watson, Grail, Strange, Godbee, Hart, Lockwood, Davis.

B
E
A
U
T
I
E
S

Division of
The ARTS

GEORGE PEABODY COLLEGE FOR TEACHERS
NASHVILLE, TENNESSEE

February 21, 1946

Dear Miss Jaworek:

To paraphrase Will Rogers, "all I know is what I read in the papers" — all I know is what I see in the pictures. How I could wish to see and know the fair contestants, for I would like to take into account additional factors representative of complete beauty — the poise, the voice, the grace of action, and the gracious manner. I find the task most difficult since I am to select only from photographs the five most beautiful co-eds. This difficulty is increased by the combined presentation of studio photographs and casual snapshots. Sometimes the studio picture fails to capture the aliveness of the subject; again the studio product is magnificent whereas the snapshot seems to have been taken under unfortunate conditions of pose and lighting.

Unable, then, to establish effective objective criteria I must resort to my questionable subjective basis of judgment and present alphabetically THE five of my choice:

Imogene Bohlar

Emily Kennedy

Mary Frances Phillips

Margaret Sherman

Owen West

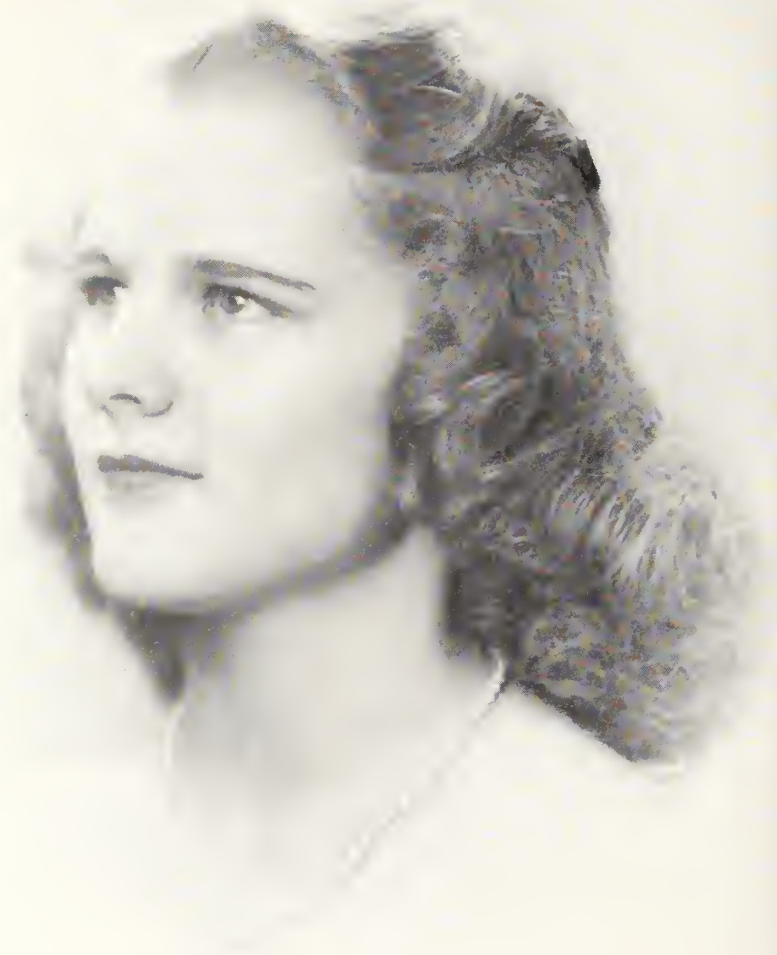
Cordially yours,

George A. Turate



Emma Jean Bohler





Emily Kennedy





Mary Frances Phillips



Margaret Sherman



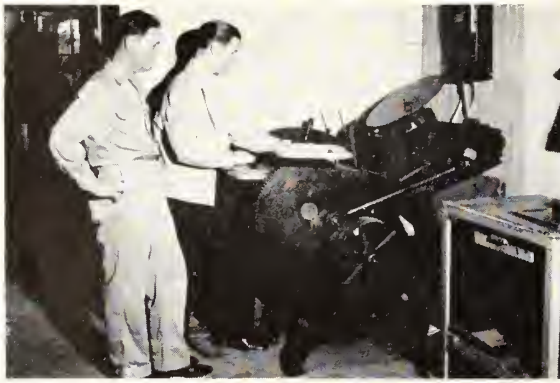


Gwen West





Smoke gets in our eyes.



*Pate shows Floyd
how it's done.*



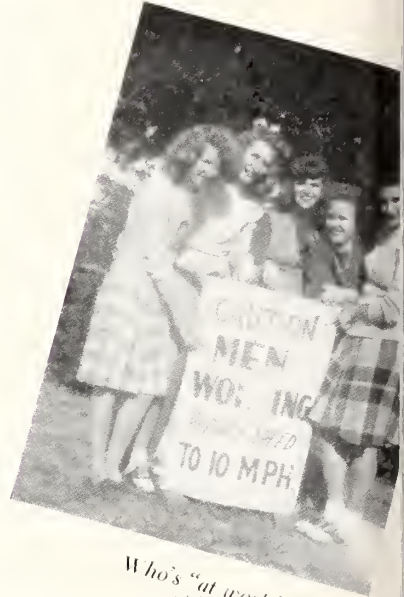
Jim, Hokz, Ray



Sun and water.



No wonder khaki beams.



*Who's "at work,"
girls?*



Thad



High on a windy hill.



'S love.



"Pokin'?"



Beasley

Advertisements

CONGRATULATIONS...

... TO THE STAFF OF THE 1946 REFLECTOR for an outstanding edition of the GEORGIA TEACHERS COLLEGE yearbook. In this volume you have captured many reflections of your life at the Teachers College and set them down indelibly for the years to come.

... TO THE BUSINESS MEN OF STATESBORO for taking an active part in making this book possible through their advertising.

... TO THE STUDENTS OF THE TEACHERS COLLEGE for recognizing the values they may receive in patronizing the advertisers of the 1946 REFLECTOR who represent the leading businesses of the community and are loyal patrons and boosters of their college.

STUDENTS! FACULTY! Read these ads.
Trade in Statesboro, in the heart of Bulloch County —
"Where nature smiles and progress has the right-of-way."

STATESBORO
CHAMBER OF COMMERCE

FRANKLIN DRUG CO.
REXALL QUALITY DRUGS
PROFESSIONAL PHARMACIST

Phone 2

STATESBORO

GEORGIA

IDEAL SHOE SHOP

Sea Island Bank Building

HOMER SIMMONS, Prop.

STATESBORO

GEORGIA

STAR FOOD STORE

FANCY AND STAPLE GROCERIES
QUALITY MEATS

Fresh Vegetables Daily

E. O. LIGHTFOOT, Manager

W. C. AKINS & SON

HARDWARE – GROCERIES
PECANS

Service Is Our Motto

See us before you sell your pecans.

ALWAYS A GOOD SHOW
AT THE
GEORGIA THEATER
AND
STATE THEATER

**L. A. WATERS
FURNITURE
COMPANY**

EVERYTHING FOR
THE HOME

STATESBORO

GEORGIA

OLLIFF & SMITH

FANCY GROCERIES
FRESH MEATS

GARDEN AND FIELD SEED
HAY AND GRAIN
POULTRY SUPPLIES

STATESBORO

GEORGIA

B. B. MORRIS & CO.

FANCY AND STAPLE GROCERIES
QUALITY MEATS
BARBECUE

F. S. PRUITT

STATESBORO OFFICE EQUIPMENT Co.

ROYAL TYPEWRITERS

Sales and Service

OFFICE AND SCHOOL SUPPLIES

34 E. Main St.

Phone 520

CLOTHES...

FOR THE FAMILY

ROSENBERG'S

STATESBORO

GEORGIA

**MODEL LAUNDRY AND
DRY CLEANERS**

Phone 55

STATESBORO

GEORGIA

SMITH-TILLMAN MORTUARY

Successor to Lanier's Mortuary

J. E. (Jake) Smith

E. Grant Tillman

AMBULANCE SERVICE

STATESBORO

GEORGIA

BOWEN FURNITURE CO.

QUALITY FURNITURE
COMFORTABLY SMART

**PRODUCERS CO-OP
ASSOCIATION**

FEEDS — SEED — COTTON

Fire Insurance and Farm Supplies

E. L. ANDERSON, Manager

**M. E. ALDERMAN ROOFING
COMPANY**

WINDOWS — DOORS — ROOFING
ASBESTOS SIDING

20-22 West Main St.

STATESBORO

GEORGIA

ELI HODGES COMPANY

FRESH SEA FOODS AND
POULTRY

16 West Main Street

STATESBORO

GEORGIA

WALTER ALDRED CO.

EVERYTHING IN
BUILDING SUPPLIES

Phone 224

STATESBORO

GEORGIA

THE BARGAIN CORNER

FRESH AND STAPLE
GROCERIES

QUALITY MEATS

HOWARD LUMBER COMPANY

ARTHUR HOWARD, Owner

A COMPLETE LINE OF
LUMBER AND BUILDING SUPPLIES

•

•

•

Phone 353

STATESBORO

GEORGIA

*Compliments
...of...*

S. W. LEWIS, INC.

STATESBORO

GEORGIA

Insist On...

GRADE "A" PASTEURIZED MILK

... It's Safer

CITY DAIRY COMPANY

STATESBORO

GEORGIA

INSURE TODAY!

JOHNSTON AND DONALDSON

Represent Reliable Companies With
Reputations for Fair Dealing

Your Oldest Friend...

THE BULLOCH TIMES

The Best in Country News

STATESBORO

GEORGIA

CONSERVATIVE MANAGEMENT

COURTEOUS SERVICE

●
*'BIG ENOUGH TO SERVE YOU...
SMALL ENOUGH TO KNOW YOU'*

●
BULLOCH COUNTY BANK

BUY AND HOLD UNITED STATES SAVINGS BONDS

Member of F. D. I. C.

GLASSWARE
CHINAWARE
SPORTING GOODS

**SOUTHERN
AUTO STORES**

TIRES
BATTERIES
SEAT COVERS
AUTO PARTS

**GRIMES JEWELRY
COMPANY**



SILVERWARE
GLASSWARE
DIAMONDS
WATCHES
CHINA

**E. A. SMITH GRAIN
COMPANY**

Everything in

BUILDERS' SUPPLIES
AND
FERTILIZERS

14 East Vine Street

STATESBORO

GEORGIA

*Compliments
...of...*

LANNIE F. SIMMONS

AUTOMOBILES
TRACTORS
FERTILIZERS
EQUIPMENT

HOKE S. BRUNSON

IF YOU LIVE AT SCHOOL...

LET US GLAMORIZE YOUR ROOM WITH
OUR HOME FURNISHINGS



IF YOU WOULD GET THE MOST OUT OF SCHOOL...

LET US GLAMORIZE YOU WITH THE
LATEST IN FASHIONS



H. MINKOVITZ & SONS
DEPARTMENT STORES

SYLVANIA

STATESBORO

SAVANNAH

**STATESBORO TRUCK AND
TRACTOR COMPANY**

TRUCKS – TRACTORS

Shop Service At Its Best

Vine Street

Statesboro, Ga.

Compliments

...of...

**STATESBORO WOMAN'S
CLUB**



**BRANNEN-THAYER
MONUMENT COMPANY**



45 West Main Street

STATESBORO

GEORGIA

Compliments of

**STATESBORO FLORAL
SHOP**

Authorized Florist

TELEGRAPH DELIVERY SHOP

Phone 319

Fair Road

F. W. DARBY LUMBER CO.

Manufacturers of

BAND SAWN YELLOW PINE

CYPRESS AND HARDWOOD

Specializing in

OAK, GUM, MAPLE AND PINE FLOORING

ALSO MOULDING AND FINISH

Located On Mill Street Between Statesboro and the College

Phone 380

STATESBORO

GEORGIA

**THE
STATESBORO
GROCERY
COMPANY**

WHOLESALE GROCERS



MILLIONS OF STUDENTS IN
AMERICA LOOK TO
PENNEYS

for young America Styled Togs for the
Campus, Sports and Dress.

Pennys, youth center of the coastal em-
pire section, with four floors of apparel
accessories, shoes, and home furnishings
is ever alert to style trends and at the
same time we major in fine quality.

More Than Ever

"It's Smart To Be Thrifty"

BUY PENNEYS

*"If It's Seed? If It's Feed?
We Have It!"*

**BRADLEY AND CONE
SEED AND FEED CO.**



**BABY CHICK
GOOD GERMINATED SEEDS**



STATESBORO

GEORGIA

THE BEST IN
COLLEGE CLOTHES

FOR
STUDENTS AND
FACULTY

HENRY'S



JOSEPH'S

*EXCLUSIVE WOMEN'S
APPAREL*

25 Broughton Street, West

SAVANNAH

GEORGIA

CLOTHES...

For the Campus

THE FAIR STORE

And the Family, Too



Fine Pianos

Sheet Music

ALNUTT MUSIC CO.

240 W. Broughton St., Savannah, Ga.

PHONOGRAPH RECORDS
MUSICAL MERCHANDISE

SAVANNAH'S LEADING
DEPARTMENT STORE

W. T. GRANT

See Us For Your Various Needs

OLIN F. FULMER, *Manager*

**THE MUTUAL LIFE INSURANCE
COMPANY OF NEW YORK**



SAVANNAH

GEORGIA

Sporting Goods — Luggage — Jewelry

WOLF'S

Broughton at Montgomery
Savannah, Georgia

Fishing Tackle, Diamonds and Watches

Ben H. Portman, Mgr. Phone 5294

COMPLIMENTS OF

THE FAVORITE SHOE STORE



STATESBORO

GEORGIA

BRADY'S DEPARTMENT STORE

SMART STYLES FOR
BOYS AND GIRLS

Come in and See Our Display

17 North Main Street

SAVANNAH'S FINEST STORE
FOR MEN AND WOMEN

MORRIS LEVY'S

The House of Fashion

SAVANNAH

GEORGIA

DIAMONDS – WATCHES
JEWELRY – GIFTS
WATCH REPAIRING

LANIER JEWELRY

"Gifts For All Occasions"

Compliments of the

JACKEAL HOTEL

STATESBORO

GEORGIA

BULLOCH EQUIPMENT CO.
OLIVER FARM EQUIPMENT

Frick Distributed Equipment

45 E. Main Street

STATESBORO

GEORGIA

*Compliments
of the*

COED BEAUTY SHOP

Telephone 216

Compliments

**SORRIER INSURANCE
AGENCY**

Established 1888 Phone 58

STATESBORO

GEORGIA

Want Quick Service?

**STATESBORO PROVISION
COMPANY**

ICE AND MEAT CURING

STATESBORO

GEORGIA

The Best in Town for . . .

PROMPT SERVICE

ELLIS DRUG CO.

FOUNTAIN SERVICE DELUXE
AND

PRESCRIPTIONS FILLED
QUICKLY AND CORRECTLY
BY PROFESSIONAL
PHARMACISTS

FIRESTONE
HOME AND AUTO SUPPLIES

Ramsey Brothers, Proprietors

47 East Main Street

STATESBORO

GEORGIA

H. W. SMITH

Statesboro's Leading Jewelers

Teachers and Students Always Welcome

STATESBORO

GEORGIA

FINE'S

"WHERE FASHIONS MAKE THEIR DEBUT"

Extends to you a cordial invitation to make your headquarters here,
when shopping in Savannah. One of Savannah's really smart shops.

Fine's is ready to serve you at all times with everything that's new
and smart in fashions for women and children!

*Compliments
...of...*

**HODGES-ATWELL
BAKERY**

STATESBORO

GEORGIA

*Compliments
...of...*

**KENNEDY'S FURNITURE
COMPANY**

STATESBORO

GEORGIA

*Compliments
...of...*

**DONALDSON-SMITH
CLOTHING CO.**

●
OUTFITTERS FOR
MEN AND BOYS
●

STATESBORO

GEORGIA

Meet Your Friends at the

**COLLEGE
PHARMACY**

"Where the Crowds Go"

PROMPT, COURTEOUS
SERVICE

●
Phone 414

Phone 416

**L. B. DOBBS
STUDIO**

Portraits For Any Occasion

31 N. Main Street

STATESBORO

GEORGIA

CITY DRUG COMPANY

PHARMACISTS

S. L. Lanier

STATESBORO

GEORGIA

LEOPOLD ADLER CO.

*Savannah's Leading and Largest
Department Store*

•
STUDENT OUTFITTERS FOR
67 YEARS

*We Invite You To Visit Our Store
While in Savannah*

SHOES
FOR ENTIRE FAMILY
GLOBE SHOE CO.

•
17 East Broughton
SAVANNAH GEORGIA

DANIEL HOGAN. INC.

DRESS GOODS
LINENS
DOMESTICS
DRAPERIES

*Buttons, Trimmings and Everything
for the Home Sewer*

McCall and Advance Patterns
Broughton and Barnard Streets

SAVANNAH GEORGIA

Quality Our Standard Since 1868

ROCKER APPLIANCE CO.
ELECTRICAL APPLIANCES

Refrigeration Contracting

37 West Main Street
STATESBORO GEORGIA

TODAY AS ALWAYS
FOR CLEANING

IDEAL CLEANERS

•
Vine Street Phone 548

VARSIITY TOWN CLOTHES

THE JONES CO.

Quality Clothing for Men and Boys

Terrell T. Tuten Carl J. Kraft

SAVANNAH

GEORGIA

Phone 7313

MANGEL'S

FEMININE APPAREL

15 Broughton St., E. Savannah, Ga.

"DINE AND DANCE"

CAMELLIA ROOM

SAVANNAH HOTEL

GEORGE FOWLER, Manager

PAINTS – VARNISHES – STAINS

NEAL BLUM COMPANY

14 West Bay Street

Savannah, Georgia

"Dependable Service for 50 Years"

READ THE BULLOCH HERALD

"The Newspaper That Went To War"

BANNER STATES PRINTING CO.

Quick Quality Printing

Jim Coleman Leodel Coleman

27 W. Main St.

Statesboro, Ga.

BULLOCH TRACTOR COMPANY

JOHN DEERE

FARM IMPLEMENTS

36 West Main Street

STATESBORO

GEORGIA

Compliments

...of...

**GEORGIA TEACHERS
COLLEGE**



Compliments

...of...

THE REFLECTOR STAFF



FROM WHERE IT IS
TO
WHERE IT ISN'T
FOR MORE THAN A QUARTER OF A CENTURY



ALFRED DORMAN CO.

WHOLESALE GROCERS

1920 — 1946



RESERVE

L4

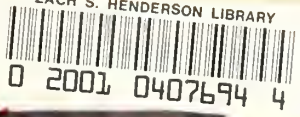
1

.G43

R4

1946

ZACH S. HENDERSON LIBRARY



of Reference

not to be taken from this room

DEMCO

